

14

ABRASIVE PRODUCTS

Aluminium Abrasive Cloth



PART #	SIZE	LxW	QTY
T0212	P36	230x280mm	50
T0213	P40	230x280mm	50
T0214	P60	230x280mm	50
T0215	P80	230x280mm	50
T0216	P100	230x280mm	50
T0217	P120	230x280mm	50
T0218	P150	230x280mm	50
T0219	P180	230x280mm	50

Water Proof Abrasive Paper



PART #	SIZE	LxW	QTY
T0256	P180	230x280mm	50
T0258	P240	230x280mm	50
T0259	P320	230x280mm	50
T0261	P400	230x280mm	50
T0262	P500	230x280mm	50
T0263	P600	230x280mm	50
T0264	P800	230x280mm	50
T0265	P1000	230x280mm	50
T0266	P1200	230x280mm	50
T0267	P1500	230x280mm	50



15

WELDING TOOLS

WELDING GLOVE



- Made of cowhide, durable and wearable.

PART #	WxH	QTY
E0831	14"	12

WELDING GLOVE



- Made of cowhide, full cotton insert, comfortable

PART #	WxH	QTY
E0835	14"	6

WELDING MASK



- Made of PP, shock-proof, light weight
- Resist from fire, high temperature, welding slag, ultraviolet and infrared rays

PART #	QTY
E0841	6

WELDING MASK



- Made of PP, shock-proof, light weight
- Resist from fire, high temperature, welding slag, ultraviolet and infrared rays
- Head Type for hands-free

PART #	QTY
E0845	6

ELECTRODE HOLDER



- Clamp Tip Made of Copper, Good Electric Conduction
- Handle Made of High Grade Plastic, in Good Insulation of High Temperature, Pulse and Fire

PART #	SIZE	COPPER CONDUCTOR	QTY
E0811	300A	170g	12
E0812	500A	250g	12

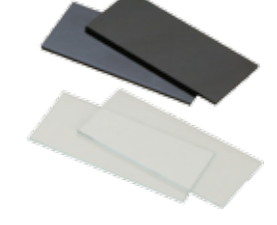
ELECTRODE HOLDER



- Clamp Tip Made of Copper, Good Electric Conduction
- Handle Made of High Grade Plastic, in Good Insulation of High Temperature, Pulse and Fire

PART #	SIZE	COPPER CONDUCTOR	QTY
E0821	300A	260g	12
E0822	500A	400g	12

WELDING MIRROR



- Resist from arc harm, resist from ultraviolet and infrared ray
- Quick Light Alternating

PART #	SIZE	QTY
E0851	Transparent	12
E0852	Darken: (9# optic)	12

REGULATOR



- Made of high-grade brass.
- Durable.
- Intake pipe with special filtering device

PART #	SIZE	QTY
E0871	YQY	1

REGULATOR



- Made of high-grade brass.
- Durable.
- Intake pipe with special filtering device

PART #	SIZE	QTY
E0872	YQE	1

REGULATOR



- Made of high-grade brass.
- Durable.
- Intake pipe with special filtering device

PART #	SIZE	QTY
E0873	YQW	1



CUTTING TORCH



- Made of high-grade brass.
- Handle made of Aluminum ally.
- Airway made of stainless, durable.
- Equipped with 2# cutting tip.

PART #	SIZE	
E0862	30 Type	1
E0863	100 Type	1
E0864	300 Type	1

WELDING TORCH



- Made of high-grade brass.
- Handle made of Aluminum alloy ally.
- Airway made of stainless, durable.
- Equipped with 2# cutting tip.

PART #	SIZE	
E0866	6 Type	1
E0867	12 Type	1

CUTTING TIP



- Made of high-grade copper.
- Polished.

PART #	SIZE	
T0611	30 type 1#	12
T0612	30 type 2#	12
T0613	30 type 3#	12
T0614	100 type 1#	12
T0615	100 type 2#	12
T0616	100 type 3#	12
T0617	300 type 1#	12
T0618	300 type 2#	12
T0619	300 type 3#	12

CUTTING TIP



- Core department made of brass, produced by Computerized Numerical Control machine.

PART #	SIZE	
T0631	30 type 1#	12
T0632	30 type 2#	12
T0633	30 type 3#	12
T0634	100 type 1#	12
T0635	100 type 2#	12
T0636	100 type 3#	12
T0637	300 type 1#	12
T0638	300 type 2#	12
T0639	300 type 3#	12

CUTTING TIP



- Core department made of brass, produced by Computerized

PART #	SIZE	
T0651	6 type 1#	12
T0652	6 type 2#	12
T0653	6 type 3#	12
T0654	6 type 4#	12
T0655	6 type 5#	12
T0656	6 type 6#	12
T0657	12 type 1#	12
T0658	12 type 2#	12
T0659	12 type 3#	12
T0660	12 type 4#	12
T0661	12 type 5#	12
T0662	12 type 6#	12

ENDURA®

16

CONSTRUCTION TOOLS

TAPE MEASURE



- Blade made of carbon steel, spraying paint on surface.
- Comfortable gripped soft ABS case.
- Zero setting.

PART #	SIZE	LENGTH	
E8001	2mx13mm	2m	12
E8002	3mx16mm	3m	12
E8004	5mx19mm	5m	12

TAPE MEASURE



- Blade made of carbon steel; spraying paint on surface.
- Two tone rubber&plastic case, comfortable to use and resistant to impact.
- Zero setting. Light blade easily pulled out.

PART #	SIZE	LENGTH	
E8032	3mx16mm	3m	12
E8034	5.5mx19mm	5.5m	12
E8036	8mx25mm	8m	12

ALUMINUM ALLOY ANGLE SQUARE



- Stainless steel

PART #	SIZE	
E8073	250mm	12
E8074	300mm	12

TAPE MEASURE



- Blade made of 50#C; spraying paint on surface.
- Two tone rubber&plastic case; resistant to impact; zero setting.

PART #	SIZE	LENGTH	
E8012	3mx16mm	3m	12
E8014	5mx19mm	5m	12
E8016	7.5mx25mm	7.5m	12
E8017	10mx25mm	10m	12

TAPE MEASURE



- Blade made of high-grade steel. High precision printing and wear resistance.
- Zero setting ensure precision.
- Coat made of ABS, impact resistance.

PART #	SIZE	
E8041	10m	6
E8042	20m	6
E8043	30m	6
E8044	50m	6

STEEL RULES



- Stainless steel

PART #	SIZE	LENGTH	
E8062	150mmx18mm	150mm	10
E8064	300mmx25mm	300mm	10
E8065	500mmx25mm	500mm	10
E8066	1000mmx30mm	1000mm	10

TAPE MEASURE



- Meet and exceed JIS; spraying paint on surface.
- Comfortable gripped soft ABC case.
- Zero setting.

PART #	SIZE	LENGTH	
E8022	3mx16mm	3m	12
E8024	5mx19mm	5.5m	12
E8026	7.5mx25mm	7.5m	12

TAPE MEASURE



- Blade made of high-grade glass fiber.
- Bear 50kg tension. Printed in metric imperial contrast.
- Zero setting ensure precision.
- Coat made of ABS, impact resistance.
- Handle made of TPR, impact resistance.
- Pointed design of the bottom, comfortable to use.

PART #	SIZE	
E8048	50m	6